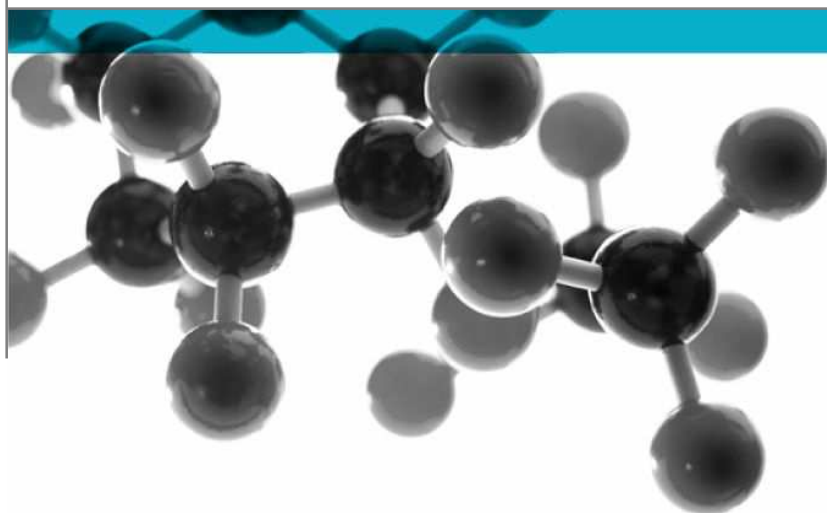


Exova Warringtonfire  
Key Industrial Park  
Fernside Road  
Willenhall  
West Midlands  
WV13 3YA

T : +44 (0) 1902 722 122  
F : +44 (0) 1902 727 242  
E : [willenhall@exova.com](mailto:willenhall@exova.com)  
W : [www.exova.com](http://www.exova.com)



# BS EN 1906:2012



## ASSESSMENT OF SPRUNG LEVER HANDLES

A Report To: Haefele GMBH & Co. KG  
Postfach 1237  
D-72192 Nagold  
Germany

Document Reference: WIL 339610 - 1

Date: 17/06/2014

Copy: Final

Issue No.: 1

Page 1

Testing  
Advising  
Assuring

This report is issued in accordance with our terms and conditions, a copy of which is available on request.

Registered Office: Exova (UK) Ltd, Lochend Industrial Estate, Newbridge, Midlothian EH28 8PL United Kingdom. Reg No.SC 70429



0621

## ASSESSMENT CONCLUSIONS

Samples of: Sprung Lever Furniture

Manufacturer Haefele GMBH & Co KG

Product : Sprung Lever Furniture

Model : 903.91.586, 903.92.586, 903.93.586, 903.91.587, 903.92.587, 903.93.587, 903.91.596, 903.92.596, 903.93.596, 903.91.597, 903.92.597, 903.93.597, 903.91.606, 903.92.606, 903.93.606, 903.91.607, 903.92.607, 903.93.607, 903.91.626, 903.92.626, 903.93.626, 903.91.627, 903.92.627, 903.93.627, 903.91.666, 903.92.666, 903.93.666, 903.91.667, 903.92.667, 903.93.667, 903.91.686, 903.92.686, 903.93.686, 903.91.687, 903.92.687, 903.93.687, 903.91.716, 903.92.716, 903.93.716, 903.91.717, 903.92.717, 903.93.717.

903.91.452, 903.92.452, 903.93.452, 903.91.453, 903.92.453, 903.93.453, 903.91.372, 903.92.372, 903.93.372, 903.91.373, 903.92.373, 903.93.373, 903.91.374, 903.92.374, 903.93.374, 903.91.375, 903.92.375, 903.93.375, 903.91.378, 903.92.378, 903.93.378, 903.91.379, 903.92.379, 903.93.379, 903.91.252, 903.92.252, 903.93.252, 903.91.253, 903.92.253, 903.93.253, 903.91.434, 903.92.434, 903.93.434, 903.91.435, 903.92.435, 903.93.435, 903.91.442, 903.92.442, 903.93.442, 903.91.443, 903.92.443, 903.93.443.

903.91.316, 903.92.316, 903.93.316, 903.91.317, 903.92.317, 903.93.317, 903.91.332, 903.92.332, 903.93.332, 903.91.333, 903.92.333, 903.93.333, 903.91.334, 903.92.334, 903.93.334, 903.91.335, 903.92.335, 903.93.335, 903.91.464, 903.92.464, 903.93.464, 903.91.465, 903.92.465, 903.93.465, 903.91.490, 903.92.490, 903.93.490, 903.91.491, 903.92.491, 903.93.491, 903.91.494, 903.92.494, 903.93.494, 903.91.495, 903.92.495, 903.93.495, 903.91.516, 903.92.516, 903.93.516, 903.91.517, 903.92.517, 903.93.517

have been assessed in accordance with:

BS EN 1906:2012 (Building Hardware – Lever Handles and Knob Furniture)

By Exova Warringtonfire [A UKAS accredited Testing Laboratory (No. 0621) and EC Notified Body number 1104 ]

At Key Industrial Park, Fernside Rd., Willenhall. West Midlands. WV13 3YA.

Results and comments as detailed below:

Clause No.	Description	Compliance
5	Requirements at Grade 2	
5.2	Check of Spindle and Fastening Elements	Yes
5.5	Free play	Yes
5.5.2	Safety requirements	Yes
5.6	Free angular movement or misalignment	Yes
5.7	Torque of return mechanism	Yes
5.8	Durability of mechanism	Yes
5.9	Repeat of Axial strength of lock furniture and fixing	Yes
5.10	Repeat of Free play measurement	Yes
5.11	Repeat of Free angular movement or misalignment	Yes
5.12	Repeat of Torque of return mechanism	Yes
5.13	Axial strength for safety furniture(optional)	No
5.3	Rotational Torque strength	Yes
5.14	Corrosion Resistance	Yes
8	Marking	Yes
C.2	Requirements for lock furniture for use on fire doors	Yes

No inferences can be made regarding performance against other requirements of this standard

All results were assessed from report number WIL 339610

Tests marked " NA" are not applicable to the type of device under test.

Document No.: WIL339610 - 1

Page No.: 2 of 17

Author: A Fairfield

Issue Date: 17/06/2014

Client: Haefele GMBH & Co KG

Issue No.: Final



Tests marked "NT" cannot be applied to the type of device under test

## AUTHORISATION

<p>Tests performed by: Alan Fairfield – Test Engineer</p>
<p>Report issued by: Alan Fairfield – Test Engineer</p> <p>Signed <i>Alan Fairfield</i></p> <p>Date 17<sup>th</sup> June 2014</p> <p>For and on behalf of Exova Warringtonfire</p>
<p>Report authorised by: Ian Keeling – Business Unit Manager</p> <p>Signed <i>Ian Keeling</i></p> <p>Date 17th June 2014</p> <p>For and on behalf of Exova Warringtonfire</p>
<p><b>Report issued: 17<sup>th</sup> June 2014</b></p>



**0621**

NOTE.  
Tests marked "Not UKAS Accredited" are not covered by the Laboratory UKAS accreditation schedule.

Tests marked NT were not tested

Tests marked NA are not applicable to the product on test.

The laboratory has tested the product supplied by the client as sampled in accordance with their own requirements

**Exova Warringtonfire is an EC Notified Body Number 1104**

This report shall not be reproduced except in full, (and then only as permitted by copyright laws), without written approval from Exova Warringtonfire

Document No.:	WIL339610 - 1	Page No.:	3 of 17
Author:	A Fairfield	Issue Date:	17/06/2014
Client:	Haefele GMBH & Co KG	Issue No.:	Final



0621

**Annex C Suitable for Use on fire door assemblies:**

Tested in a door assembly which satisfies criteria of EN 1634 – 1

Test report No. 195595 AR Iss 3

Dated

Result – Models contained in this report were covered for use on fire doors by assessment report number 195595 AR Iss 3

Classification achieved.

Category of use	Durability	Door mass	Fire resistance	Safety	Corrosion resistance	Security	Type of operation
1 - 4	6 or 7	--		0 or 1	0 - 4	0 - 4	A, B, or U
2	6	-	B	0	3	0	B

**Clause 8 marking**

Product and or literature, packing etc Should be marked with:

Manufacturer's name or Trade mark. HAFELE

Product model identification 903.92.586

Classification according to clause 4 Yes

Standard number Yes

The year and week of manufacture – may be in coded form Yes

Document No.: WIL339610 - 1

Page No.: 16 of 17

Author: A Fairfield

Issue Date: 17/06/2014

Client: Haeefele GMBH & Co KG

Issue No.: Final



**UNCERTAINTY OF MEASUREMENT**

Clause 6.1 of the standard specifies the following tolerances on values:

MASS IN KG     $\pm 2\%$                       LENGTH IN MM     $\pm 2\%$   
 Force in N      $\pm 2\%$                       Torque in Nm     $\pm 2\%$               time in secs     $\pm 5\%$

The uncertainty of measurements calculated for a confidence level of 95% throughout these tests are within the limits of these tolerances.

## OBSERVATIONS AND COMMENTS

(include details of all opinions and interpretations given in this report)

All results contained in this report were assessed from report number WIL 339610 which was based on testing the 903.92.586 model, which in our opinion is a more onerous model. It is therefore our opinion that these results are also valid for the models contained in this report.

- END OF REPORT -

## Revision History

Issue No :	Re - Issue Date :
Revised By:	Approved By:
Reason for Revision:	

Issue No :	Re - Issue Date :
Revised By:	Approved By:
Reason for Revision:	

Document No.: WIL339610 - 1

Page No.: 17 of 17

Author: A Fairfield

Issue Date: 17/06/2014

Client: Haefele GMBH & Co KG

Issue No.: Final

